



# Trauma & Fracture Care

Our trauma specialists are highly specialized in treating traumatic orthopedic injuries and fractures. Affiliated with Barnes-Jewish Hospital and St. Louis Children's Hospital, both of which are Level 1 trauma centers verified by the American College of Surgeons, patients will have the best in physician expertise and comprehensive services for both inpatient and outpatient care.

## OUR SERVICES

Our board-certified orthopedic trauma surgeons are fellowship-trained in trauma care and work closely with other medical specialists to treat all types of injured patients including those with high and low energy trauma, upper or lower extremity injuries, and those with both acute and post traumatic problems.

We provide the most comprehensive range of trauma services in the region including limb reconstruction, general surgery, intensive and critical care, vascular surgery, neurosurgery, and geriatric and osteoporosis care. Our team also includes subspecialists in bone infectious diseases, who will customize antibiotic therapies in the case of an open fracture or infection.

## TREATMENT APPROACH

A multidisciplinary approach allows for expert decision-making regarding surgical or non-surgical approaches and reconstructive needs. Inpatient and outpatient rehabilitation and discharge planning are collaborative efforts among the patient, their family, the surgical team, therapists, and dedicated orthopedic case coordinators.

## RESEARCH AND CLINICAL TRIALS

We are nationally recognized for orthopedic research and premier clinical care. Our research program is consistently a top-funded orthopaedic program in the United States by the National Institutes of Health.<sup>1</sup> For information on current research and clinical trials available, please visit our website at: [ortho.wustl.edu](http://ortho.wustl.edu).

## 24/7 Availability

Our team stands ready to accept hospital-to-hospital transfers, outpatient referrals, and provide consultations. The orthopedic trauma service can be reached 24/7 through the [Doctors Access Line at \(314\) 747-3251](tel:(314)747-3251).



## Comprehensive Care

Our orthopedic trauma team manages fractures of all body parts from the clavicle to the foot. We treat simple fractures and complex conditions, such as periarticular fractures, pelvis and acetabular injuries, fracture non-unions and malunions, and bone infections.

## Unmatched Experience

Our orthopedic trauma team sees over 4,000 patient visits per year.

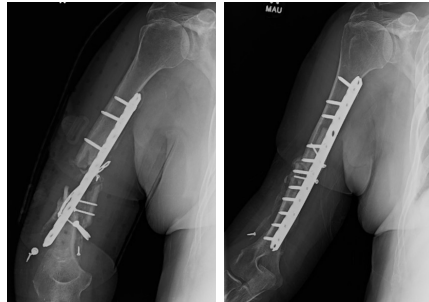
### COMMONLY TREATED CONDITIONS

- Complications of trauma, such as osteomyelitis (infection of the bone), nonunions (unhealed fractures) or malunions (healed fracture deformities)
- Nerve, tendon and soft tissue injuries
- Fractures of the arms, legs, and joints
- Fractures of the pelvis and acetabulum
- Post-traumatic reconstruction of the upper and lower extremities
- Traumatic spinal injuries
- Treatment and management of patients with multiple fractures

### Referring physicians:

Our team stands ready to accept hospital-to-hospital transfers and outpatient referrals, and to provide consultations. The orthopedic trauma service can be reached 24/7 via the Doctors Access Line at **(314) 747-3251**.

### SPECIALIZED SERVICES



Preoperative

Postoperative

#### Fracture Nonunions and Infections

We have extensive experience in treating the most severe fractures, nonunions (unhealed fractures requiring additional surgery), and infected nonunions (infection of a fractured bone). Infected nonunions can be extremely difficult and time consuming to treat. Our team includes subspecialists in musculoskeletal infections who will customize antibiotic therapies specific to each patient's infection, as well as a dedicated orthopedic limb reconstructive service to manage any associated soft-tissue needs.

#### Microsurgical Limb Reconstruction


Our orthopedic trauma surgeons and hand surgeons have advanced training in specialized techniques to reconstruct limbs with microsurgical tissue-transfer procedures. Expertise in these limb-saving procedures can be vital for limb salvage and extremity reconstruction in cases of severe trauma, open fractures, or infections. We also provide bony reconstruction utilizing vascularized bone and soft tissue grafts and flaps. These techniques are critically helpful to fill bone defects with transplantation of a healthy segment of living bone.


#### Brachial Plexus and Peripheral Nerve Surgery

Our microsurgical team treats severe injuries of the brachial plexus as well as the peripheral nerves of both the upper and lower extremities. All aspects of non-surgical and surgical care are provided, with electrophysiological assessments, nerve transfer procedures, and direct surgery on the brachial plexus with or without nerve grafting procedures.

Source: \*Blue Ridge Institute for Medical Research  
R 4-2018

**Schedule an appointment:**

 (314) 514-3500

 [ortho.wustl.edu/Trauma](http://ortho.wustl.edu/Trauma)



Orthopedics